

**NOTES**



New proposed sign



Existing shared used bay



Existing double yellow lines

**Public Realm Projects  
Parking Design**

Environment and Leisure  
Floor 3, hub 1  
Southwark Council  
160 Tooley Street  
PO Box 64529  
London, SE1P 5LX

[www.southwark.gov.uk/parkingprojects](http://www.southwark.gov.uk/parkingprojects)



**Project**  
(EC) PARKING CHANGES

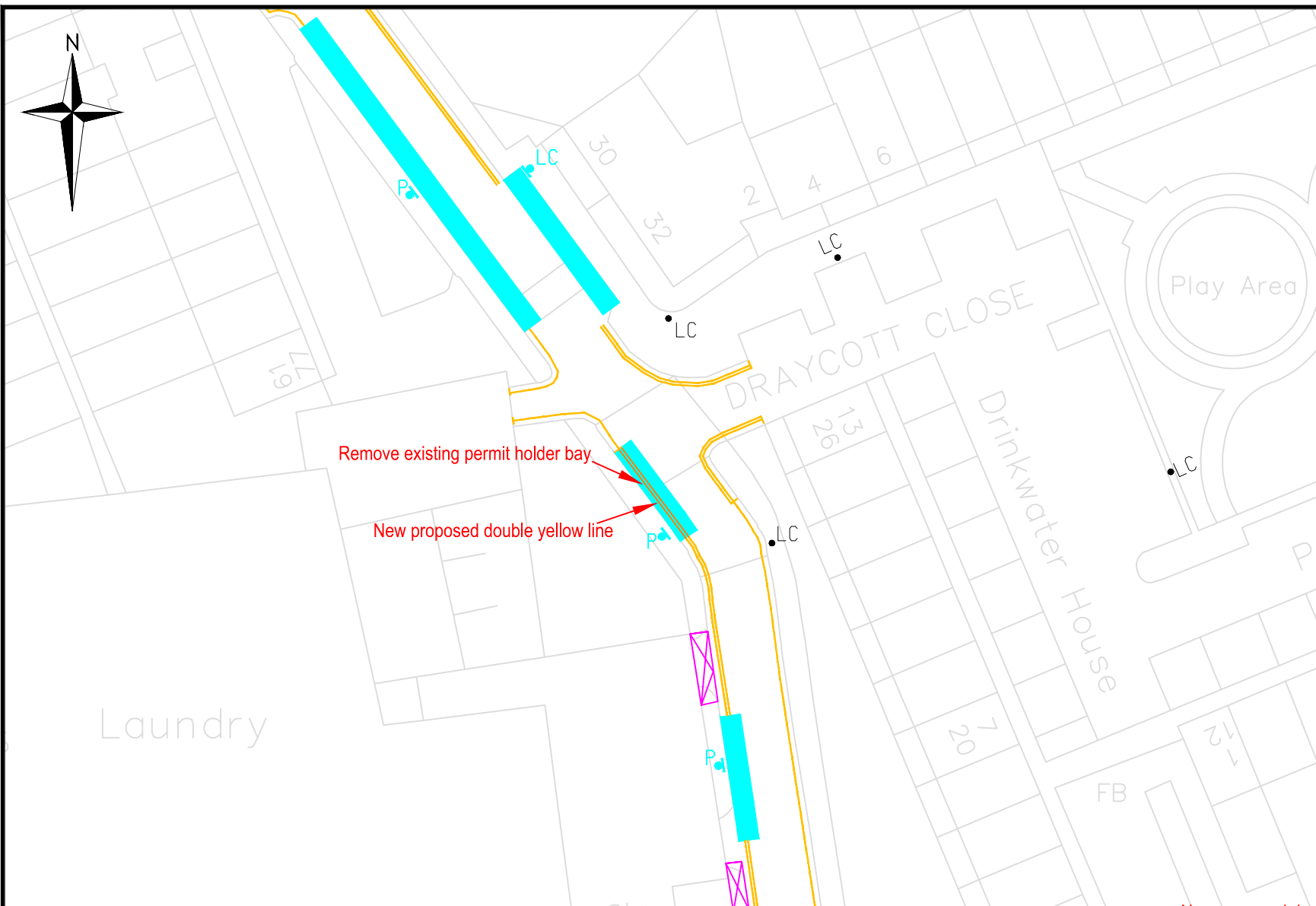
**Drawing Title**  
Bantry Street  
New proposed pedestrian signs




Community Council <b>CAMBERWELL</b>					
Ward(s) <b>BRUNSWICH PARK</b>					
Date	Scale	Drn	Chk	App	
19/06/15	1:1000 @ A4	DA	DA	DA	
Dwg No. ISF				Rev	
Status DETAILED DESIGN				A	

Rev	Date	Description	Drn	Chk	App

S:\NET\_DEV\01\_PROJECTS\2014\_15\1071 - East Camberwell CPZ review\09 - Documents, Reports & Drawings\4. CAD\Review of as built dwg\EC\_ASBLT\2 for review.dwg.

# APPENDIX G



- NOTES**
-  New proposed double yellow lines
  -  Existing permit holders bay
  -  Existing double yellow lines

Public Realm Projects  
Parking Design

Environment and Leisure  
Floor 3, hub 1  
Southwark Council  
160 Tooley Street  
PO Box 64529  
London, SE1P 5LX

[www.southwark.gov.uk/parkingprojects](http://www.southwark.gov.uk/parkingprojects)



Project  
**(EC) PARKING CHANGES**

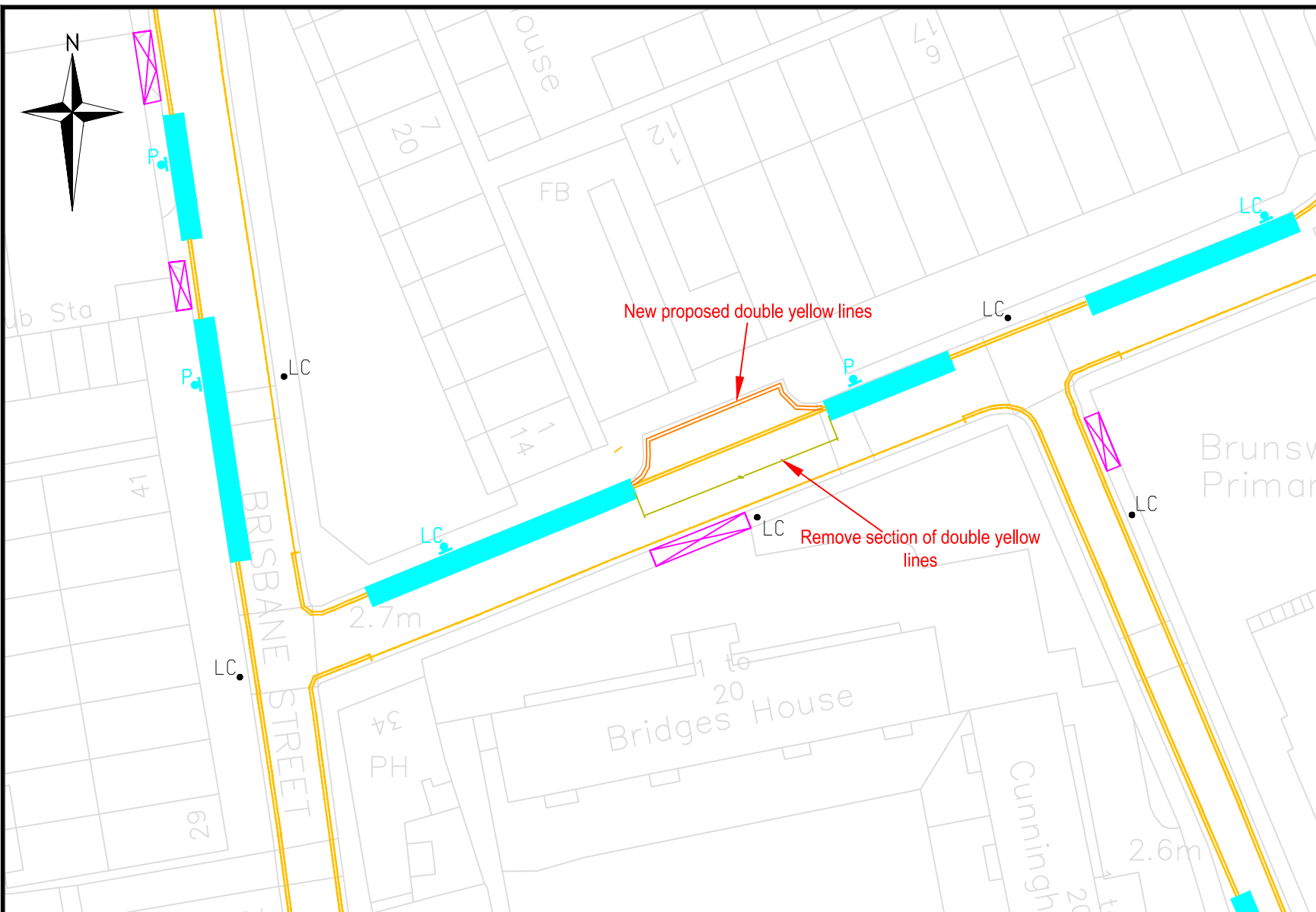
Drawing Title  
Brisbane Street  
Removal of existing permit holder bay

Community Council <b>CAMBERWELL</b>					
Ward(s) <b>BRUNSWICH PARK</b>					
Date	Scale	Drn	Chk	App	
19/06/15	1:500 @ A4	DA	DA	DA	
Dwg No. ISF				Rev	
Status DETAILED DESIGN				A	

Rev	Date	Description	Drn	Chk	App

S:\NET\_DEV\01\_PROJECTS\2014\_15\1071 - East Camberwell CPZ review\09 - Documents, Reports & Drawings\4. CAD\Review of as built dwg\EC\_ASBLT\2 for review.dwg.

# APPENDIX G



- NOTES**
- New proposed double yellow lines
  - Existing double yellow lines
  - Existing permit holders bay

**Public Realm Projects  
Parking Design**

Environment and Leisure  
Floor 3, hub 1  
Southwark Council  
160 Tooley Street  
PO Box 64529  
London, SE1P 5LX

[www.southwark.gov.uk/parkingprojects](http://www.southwark.gov.uk/parkingprojects)



**Project**  
(EC) PARKING CHANGES

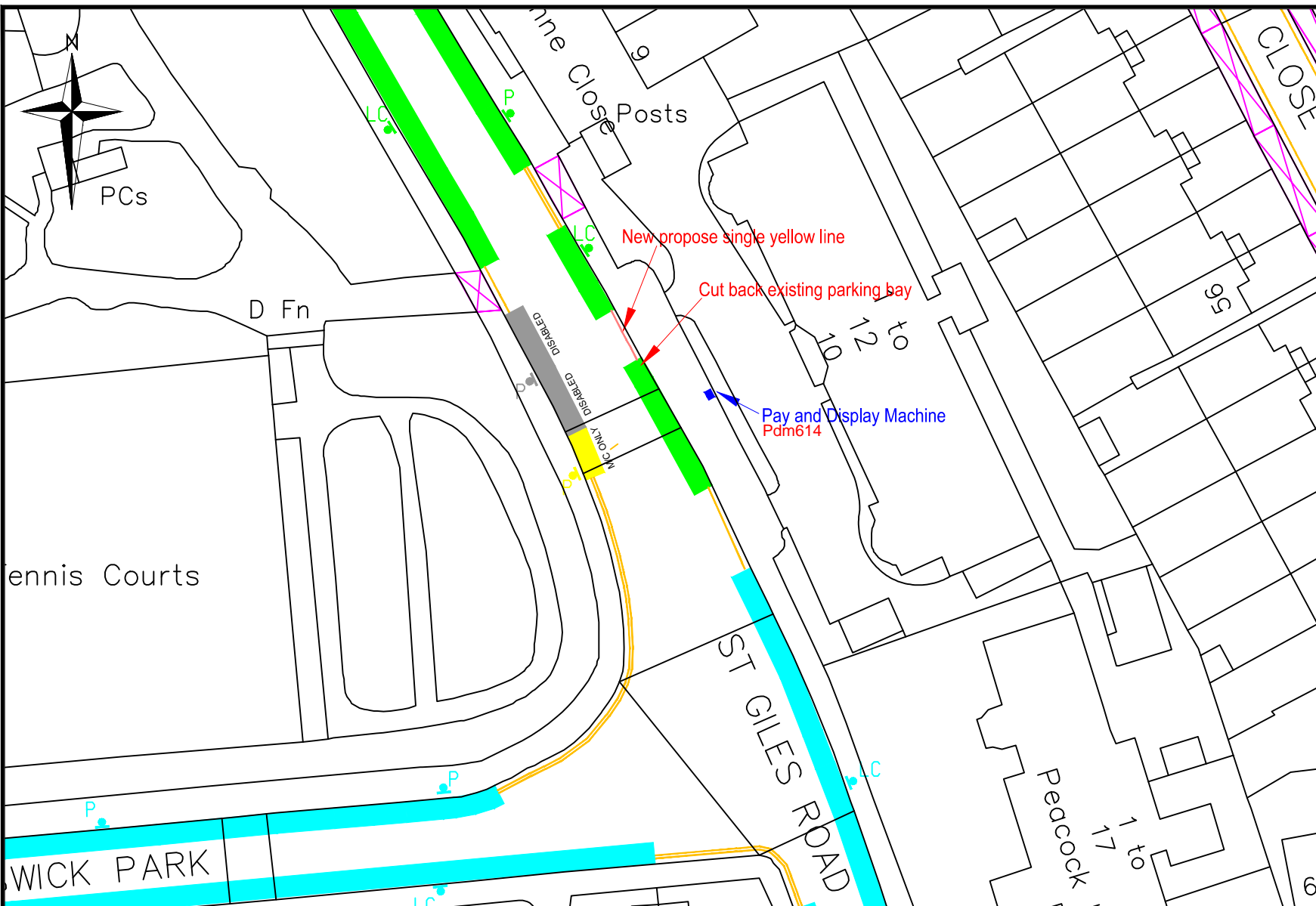
**Drawing Title**  
Picton Street  
Removal of existing double yellow lines

Community Council CAMBERWELL					
Ward(s) BRUNSWICH PARK					
Date	Scale	Drn	Chk	App	
19/06/15	1:500 @ A4	DA	DA	DA	
Dwg No. ISF				Rev	
Status DETAILED DESIGN				A	

Rev	Date	Description	Drn	Chk	App

S:\NET\_DEV\01\_PROJECTS\2014\_15\1071 - East Camberwell CPZ review\09 - Documents, Reports & Drawings\4. CAD\Review of as built dwg\EC\_ASBLT\2 for review.dwg.

# APPENDIX G



- NOTES**
- New proposed single yellow line
  - Existing shared used bay
  - Existing double yellow lines

**Public Realm Projects  
Parking Design**

Environment and Leisure  
Floor 3, hub 1  
Southwark Council  
160 Tooley Street  
PO Box 64529  
London, SE1P 5LX

[www.southwark.gov.uk/parkingprojects](http://www.southwark.gov.uk/parkingprojects)



**Project**  
(EC) PARKING CHANGES

**Drawing Title**  
St Giles Road  
New proposed waiting restrictions

Community Council <b>CAMBERWELL</b>					
Ward(s) <b>BRUNSWICK PARK</b>					
Date	Scale	Drn	Chk	App	
19/06/15	1:500 @ A4	DA	DA	DA	
Dwg No. ISF				Rev	
Status DETAILED DESIGN				A	

Rev	Date	Description	Drn	Chk	App

S:\NET\_DEV\01\_PROJECTS\2014\_15\1071 - East Camberwell CPZ review\09 - Documents, Reports & Drawings\4. CAD\Review of as built dwg\EC\_ASBUILT\2 for review.dwg.

# APPENDIX G